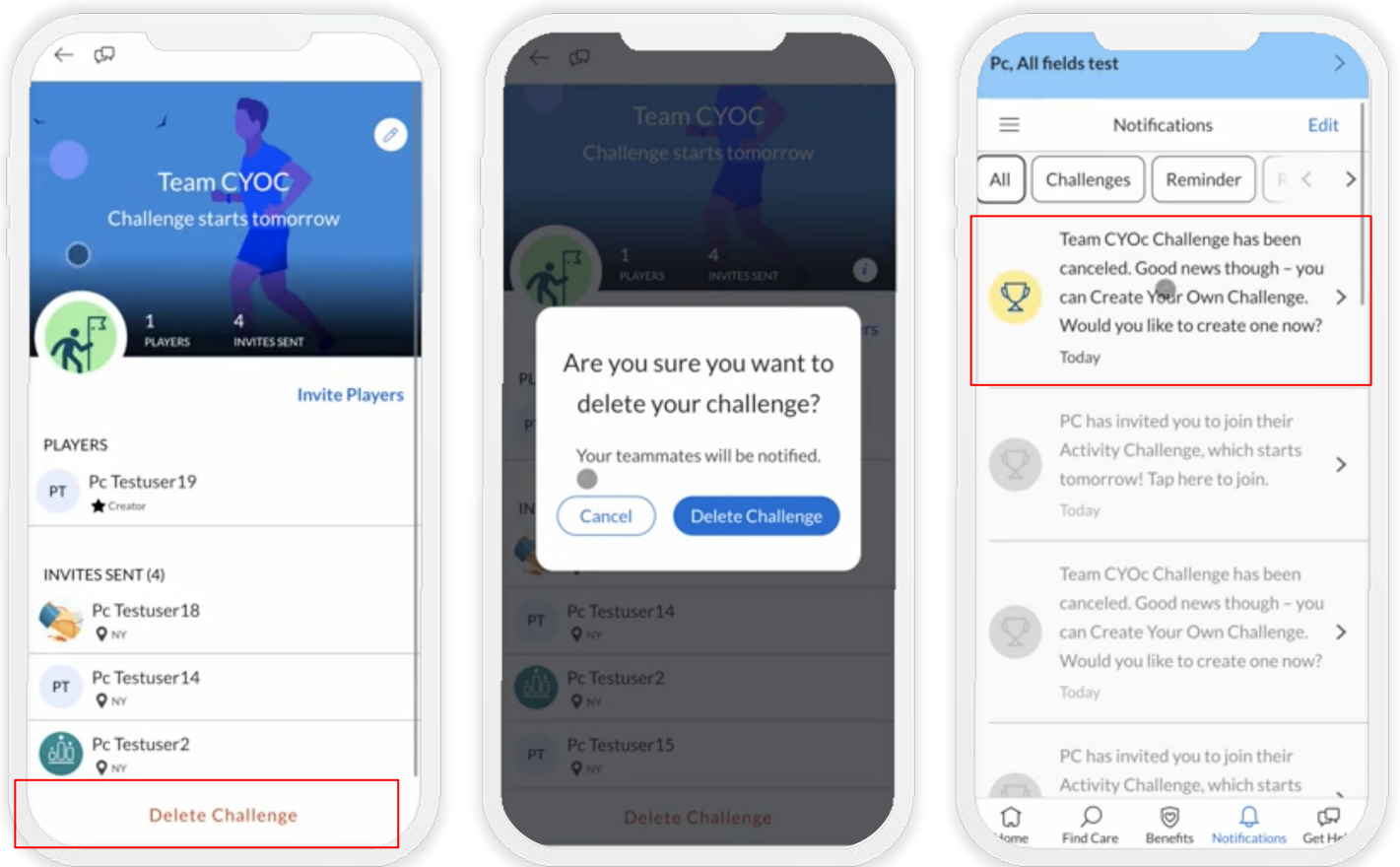


CYOC: Members May Now Delete Challenges

For Create Your Own Challenge (CYOC), team captains now have the ability to delete a Challenge before it commences. All members who received invitations to join the Challenge will be notified in the event of a cancellation. This enhancement provides added flexibility for participants when changes in plans may occur.

Available to customers of: Whole Health Navigation, Care Navigation, Complete Digital Hub, Care Guidance, and Holistic Wellbeing



CYOC: Participation Limit increased to 100

Create Your Own Challenge (CYOC) can now accommodate up to 100 members to join in on an experience of fun and friendly competition. The team captain is able to invite up to 99 other members to join their Challenge to see who can accomplish the most physical activity!

Available to customers of: Whole Health Navigation, Care Navigation, Complete Digital Hub, Care Guidance, and Holistic Wellbeing

75k Steps per Day Limit on all Challenges

In order to ensure the accuracy of step counts during Challenge periods, a cap of 75,000 steps has been introduced for all Castlight Challenges. This daily limit encompasses steps from both tracker-generated entries and manually logged activity.

Available to customers of: Whole Health Navigation, Care Navigation, Complete Digital Hub, Care Guidance, and Holistic Wellbeing

CYOC: Additional Time Before Challenge Begins

When a member initiates a Create Your Own Challenge (CYOC), the event has started on the next calendar date. If the Challenge was created at the end of the day, for example on 14th November 8:00 PM, there would be a four hour time window until the start of the Challenge (15th November 12:00 AM). With this new release, the Challenge start day for CYOC will now begin after a minimum of 24 hours. In the provided example, the Challenge will now start on 16th of November 12:00 AM creating a 28 hour window for members to sign up, prepare, and fully benefit from the exciting Challenges your employees create.

Available to customers of: Whole Health Navigation, Care Navigation, Complete Digital Hub, Care Guidance, and Holistic Wellbeing